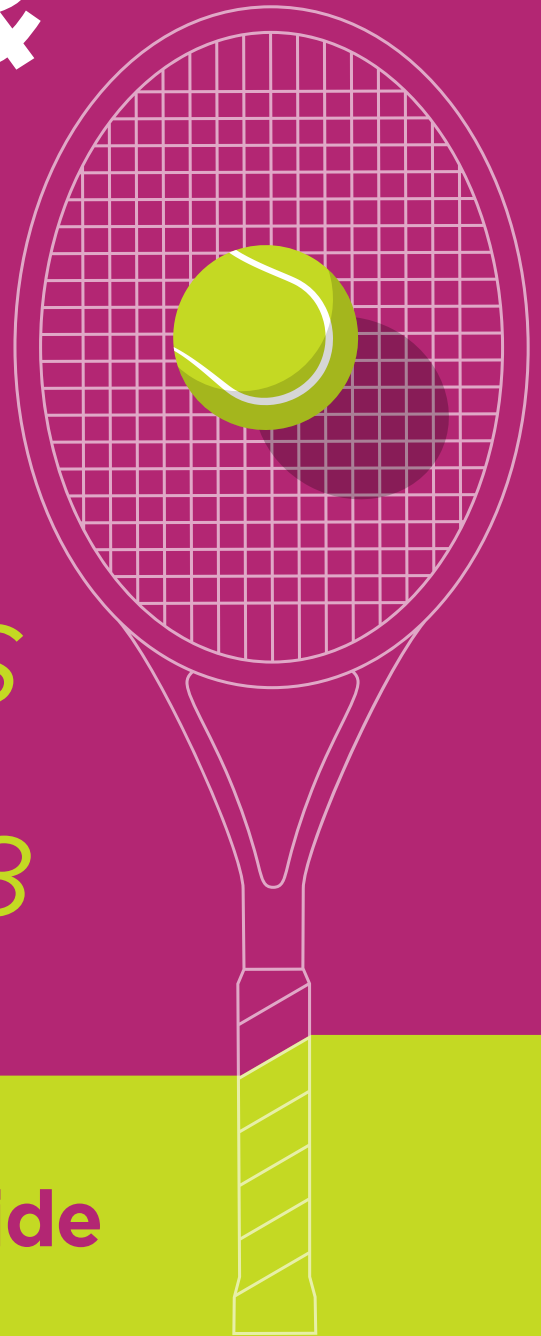


**CHILL OUT &  
VIC TENNIS**

**FAST4**

**GRASS COURT  
CHAMPIONSHIPS  
AND TENNIS  
SOCIAL DAY 2018**



## Official Tournament Guide

**Saturday 10<sup>th</sup> March 2018**

**12pm until 5pm**

**Daylesford Lawn Tennis Club**  
64 West Street Daylesford

[victennisglamslam@gmail.com](mailto:victennisglamslam@gmail.com)  
[victennis.com](http://victennis.com)



[chilloutfestival.com.au](http://chilloutfestival.com.au)

# Player Levels and Grades

PLAYER TYPE	LEVEL DESCRIPTION	VIC TENNIS GRADE
<b>OPEN</b>	<b>Highly advanced tournament player</b> NTRP 5.0+ rating	<b>A+</b>
<b>A</b>	<b>Advanced tournament player</b> NTRP 4.5 rating	<b>A+</b>
<b>B</b>	<b>High intermediate tournament player</b> NTRP 3.5-4.0 rating	<b>A-</b>
<b>C</b>	<b>Low intermediate tournament player</b> NTRP 3.0 rating	<b>B+</b>
<b>D</b>	<b>Beginning tournament player</b> NTRP 2.5 or less rating	<b>B-</b>

CHILL OUT & VIC TENNIS

**FAST4** GRASS COURT CHAMPIONSHIPS  
AND TENNIS SOCIAL DAY

[victennisglamslam@gmail.com](mailto:victennisglamslam@gmail.com)  
[victennis.com](http://victennis.com)



[chilloutfestival.com.au](http://chilloutfestival.com.au)



# FAST4 Scoring System

**To win a main draw singles match in the Fast4 format, a player must win a best-of-three sets.**

Sets are determined on a first-to-four-games basis, unlike the six games played in regular tennis sets. Tiebreakers are at 3 games all and is also reduced in length - *first to five points* - with a sudden death Power Point at four points-all.

If scores are level at the end of the second set, then the Third Set is a tie breaker - *first to five points* - with a sudden death Power Point at four points-all.

## NO ADVANTAGE

The receiver elects which service side he/she prefers when the score is deuce. There are no advantage points. This applies to both singles and doubles.

## NO LETS

If the ball strikes the net cord and lands within the service lines, play continues as it would during a normal rally. There are no lets.

In doubles, the non-receiver is permitted to return the serve if the ball strikes the net cord and falls in. (The Kevin Parrish Rule)

## QUICK CHANGEOVERS

Players must be ready within 60 seconds of the change of ends and 90 seconds between sets. Players cannot sit down at the change of ends but may do so - *quickly* - between sets.

---

## TIE BREAKERS EXPLAINED...

### First to 5 points

- The player whose turn it is to serve at the commencement of the tiebreak (*Player A*) will serve two (2) points. The opposing player (*Player B*) will then serve two (2) points.
- Player A (*or team mate of Player A in doubles*) will then serve two (2) points. Player B (*or team mate of Player B in doubles*) will then serve the following two (2) points.
- If the score reaches 4-4, Player B (*or the team mate of Player B in doubles*) will serve the final point of the tiebreaker with Player A choosing which side the ball will be served.
- Players will change ends only after the first four (4) points have been played.

CHILL OUT & VIC TENNIS  
**FAST4** GRASS COURT CHAMPIONSHIPS  
AND TENNIS SOCIAL DAY

[victennisglamslam@gmail.com](mailto:victennisglamslam@gmail.com)  
[victennis.com](http://victennis.com)



[chilloutfestival.com.au](http://chilloutfestival.com.au)



Join our FaceBook page

# Glam Slam by VicTennis

Players Lunch included

Refreshments at the bar

Lunch guests \$15

Proper tennis shoes must be worn

Bookings for social tennis and guest lunch  
need to be purchased at Tournament desk

CHILL OUT & VIC TENNIS

**FAST4** GRASS COURT CHAMPIONSHIPS  
AND TENNIS SOCIAL DAY

[victennisglamslam@gmail.com](mailto:victennisglamslam@gmail.com)  
[victennis.com](http://victennis.com)



[chilloutfestival.com.au](http://chilloutfestival.com.au)



## M.Chapoutier wines tasting notes for Chill Out tournament

The company M. Chapoutier has been making wines in the Rhone Valley of France for the past 200 years and is based in the beautiful little city of Tain l'Hermitage, in the department of the Drome. Under the guidance of CEO Michel Chapoutier, the company has expanded geographically and now owns vineyards in France, Portugal, Spain, USA and of course Australia. Any visit to France cannot be complete without a visit to Tain L'Hermitage, not solely to visit the cellars of M. Chapoutier but also to see the mythic hill of Hermitage with its small chapel (where the hermit lived!). You will also find the home of Valrhona chocolates just down the road from M. Chapoutier tasting rooms.

The city on the opposite side of the Rhone River from Tain l'Hermitage is Tournon. So taking liberty from a wine induced extension of the truth, M. Chapoutier uses the name of Tournon as their brand name for their wines made in Australia – other side of the river leading to other side of the planet.

For our Chill-out Fast 4 tournament I have selected the following wines for your pleasure:

Tournon 2017 Mathilda Grenache Rosé. This Provencal style rosé is packed with grapefruit and floral aromas, along with discreet hints of peach and melon. The finish is enhanced by a subtle spritz to give a refreshing acidity. Perfect drinking from noon onward by itself as aperitif or with charcuterie, with red capsicum based rice dishes and also to give an added lift to the spirits prior to a game of tennis.

Tournon 2016 Landsborough Chardonnay from the Victorian Pyrenees. This fresh crisp Chardonnay comes from vines grown on the ancient gold fields of the Pyrenees and is a real treasure. The vineyard has a southerly exposure so the climate is cooler ensuring a wine of acidity and minerality. The grapes are fermented in barrels with wild yeasts and then aged 9 months in older French puncheons – these oversize barrels impart much less oak flavours whilst still giving the roundness of matured chardonnay. Subtle, fresh with a golden colour! The perfect match to chicken burgers with mustard sauce, seafood curry or mature cheddar cheeses.

Tournon 2016 Shays Flat Sangiovese from the Victorian Pyrenees. What a delight this wine is, the perfect match on a warm day for barbeque sausages, burgers, pastas with tomato based sauces, olives, bruschetta and dips – add parmesan cheese if you can find it. Sangiovese is the natural grape variety from Chianti in Tuscan Italy and pairs fabulously well with food from this region. Aromas of cherry, ripe red fruits and liquorice. I was forced to secure extra stocks of this one! The perfect way to wind down after a fabulous day of tennis.

CHILL OUT & VIC TENNIS

**FAST4** GRASS COURT CHAMPIONSHIPS  
AND TENNIS SOCIAL DAY

[victennisglamslam@gmail.com](mailto:victennisglamslam@gmail.com)  
[victennis.com](http://victennis.com)



[chilloutfestival.com.au](http://chilloutfestival.com.au)



# Bar List

## WINES

### M Chapoutier Wines

Heathcote Victoria/ Tain l'Hermitage Rhone Valley France

**2017 Tournon Mathilda Grenache Rose**

**2016 Tournon Landsborough Chardonnay**

**2016 Tournon Shays Flat Sangiovese**

**GLASS \$8 BOTTLE \$40**

Wines curated by Neil Allanby



**ASAHI \$7**

**CIDER \$7**

**BOURBON AND COKE/ G&T \$8**

**SOFT/SPORTS DRINKS \$3**

**Order and Pay at the tournament desk**

**EFTPOS Available**

CHILL OUT & VIC TENNIS

**FAST4** GRASS COURT CHAMPIONSHIPS  
AND TENNIS SOCIAL DAY

[victennisglamslam@gmail.com](mailto:victennisglamslam@gmail.com)  
[victennis.com](http://victennis.com)



[chilloutfestival.com.au](http://chilloutfestival.com.au)



# HashTags

**#ChillOutDaylesford**

**#ChillOutFestival**

**#ChillOutFast4**

**#VicTennis**

**#Chapoutieraus**

**#TheDiscreetSommelier**

CHILL OUT & VIC TENNIS

**FAST4** GRASS COURT CHAMPIONSHIPS  
AND TENNIS SOCIAL DAY

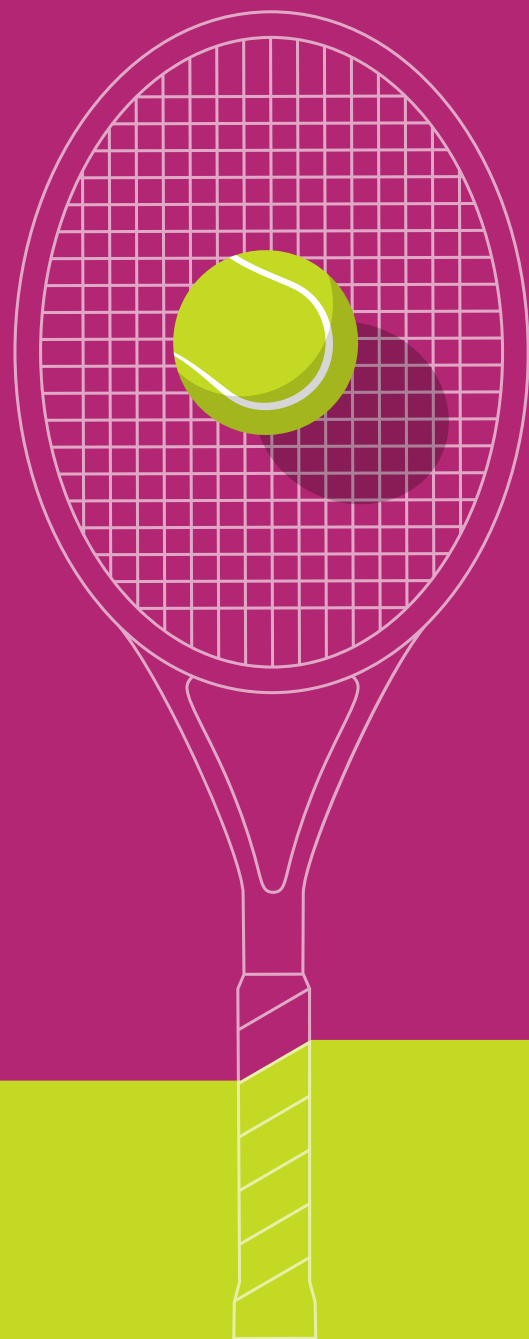
[victennisglamslam@gmail.com](mailto:victennisglamslam@gmail.com)  
[victennis.com](http://victennis.com)



[chilloutfestival.com.au](http://chilloutfestival.com.au)



# HAVE A **FUN** DAY



Artwork designed by

VicTennis Creative Director  
**Mauro Cecchin**

**cecchin**  
creative

[cecchincreative.com](http://cecchincreative.com)



[chilloutfestival.com.au](http://chilloutfestival.com.au)